

# Great Redwood Trail Project Updates

---

GRTA Board Meeting

September 19, 2024



**GREAT REDWOOD  
TRAIL AGENCY**



## **GRT Planning:**

Willits to Longvale

(12.7 miles, Segments 10 & 11)

---

**Partner:** Mendocino Land Trust (MLT)

**Potential Funding:** State Coastal Conservancy (SCC) Phase 1 planning grant

**Next Steps:** SCC Board consideration of Phase 1 planning grant in 2025

Photo: Recent field visit with GRTA Team and MLT. Collapsed Tunnel north of Willits, near Ryan Creek Road.





## **GRT Planning:**

Island Mountain Tunnel (north side) to Cain Rock Railroad Bridge (11.2 miles, Segment 18)

**Connections:** Eel River Canyon Preserve, Emerald Waters Reserve

**Partner:** The Wildlands Conservancy

**Potential Funding:** SCC

**Next Steps:** SCC Board consideration (11/21/24) of Phase 1 planning grant:

- Tribal and community engagement
- Cultural, historical, geotechnical, botanical, wildlife surveys
- Vegetation management by CCC

Photo: Eel River, near Wildlands' Eel River Canyon Preserve





# **GRT Planning:**

Alderpoint Planning, Phase 1  
(~4.5 miles, Segment 19)

**Connections:** Alderpoint Depot to Emerald Waters Reserve

**Partner:** Revitalizing Opportunities for Alderpoint Region (ROAR) with fiscal sponsor, Community Initiatives

**Funding:** SCC grant - approved Sept. 5!

## **Next Steps:**

- Tribal collaboration and employment opportunities
- Cultural resources study, land survey
- Vegetation management for site access
- Trash removal from Alderpoint Depot and ROW
- Draft concepts for interpretive and trail design elements, with tribal & community engagement

Photo: Looking upriver in the Eel River Canyon in Alderpoint area.  
Rail corridor visible on the lower right bank.





# GRT Planning:

Loleta

(Up to 7.7 miles, Segment 32)

**Connections:** Exact extents TBD

**Partner:** Loleta Community Chamber

**Potential Funding:** TBD

## **Current Efforts:**

- Chamber collected community comments on Draft Master Plan concepts at Loleta Elementary and Jersey Scoops
- **Loleta Community Celebration 9/21**  
12-9pm in the Park

## **Next Steps:**

- Further tribal consultation, neighbor outreach, and community engagement
- Support project development and grant applications





## **GRT Planning:**

Eureka to College of the Redwoods

(4.5 miles, Segment 33)

**Connections:** Tooby Rd. to College of the Redwoods

**Partner:** County of Humboldt

**Funding:** Caltrans (Sustainable Transportation Planning Grant) and HCAOG

### **Current Efforts:**

- Summarize tribal and community feedback
- Analyze opportunities and constraints
- Present preliminary engineering plans

**Next Steps:** Identify lead for next phase



Photo: Rail corridor and existing trail near Tooby Rd. Trailhead, looking south toward King Salmon. Yellow arrow shows segment alignment. Source: County of Humboldt.



## **GRT Planning:**

Annie & Mary Connectivity Project in North Arcata (3.5 miles, Segment 37)

### **Connections:**

- Arcata Skate Park to Humboldt Bay Municipal Water District Park 1
- CalPoly Humboldt; Valley West neighborhood; Annie & Mary Trail

**Partners:** City of Arcata (lead), County of Humboldt, Humboldt Bay Municipal Water District, Caltrans

**Funding:** Active Transportation Program (ATP)

**CEQA:** Complete (ISMND)

### **Next Steps:**

- Finish site control and design phase
- GRTA trail license and adopt CEQA

**Target construction time frame: 2025-2026**



10' Trail

2' Shoulder



## GRT Planning:

Baduwa't Trail

(~1.7 miles, Segment 39)

**Connections:** Communities of Blue Lake and Blue Lake Rancheria, with Glendale using both GRTA and Caltrans ROW directly adjacent to Blue Lake Rancheria & Hwy 299.

**Partners:** Blue Lake Rancheria (lead), Caltrans (co-lead), Friends of Annie & Mary Trail, and County of Humboldt

**Potential Funding:** ATP funding to Blue Lake Rancheria TBD; awards announced in late 2024

Photos: Blue Lake Rancheria lands and GRTA ROW near Glendale Drive underpass at Hwy 299 (top). End of existing Annie & Mary Trail segment at Chartin Rd. in Blue Lake (bottom).





# GRT Planning:

Samoa

(1.1 miles, Segment 43)

---

**Connections:** USS Milwaukee Memorial to THA Roundhouse, through town of Samoa

**Partners:** Humboldt Bay Harbor, Recreation, & Conservation District (lead); Town of Samoa (Danco); Timber Heritage Association (THA)

**Funding:** Federal Department of Transportation INFRA Grant; awarded 2024

## **Next Steps:**

- Continued tribal consultation and community engagement
- Analyze opportunities and constraints
- Develop preliminary designs

Photo: GRTA right-of-way on the Samoa Peninsula.





## **GRT Construction:**

City of Ukiah Rail-with-Trail,  
Phase 4  
(~1.9 miles, Segment 4)

**Partner:** City of Ukiah; has GRTA  
license agreement

**Funding:** CNRA's Urban Greening  
Program

**CEQA:** draft ISMND has been  
released

### **Next Steps:**

- Adopt CEQA determination

**Target Construction Time  
Frame:** Two construction seasons  
(Dates TBD)



Photo: Ribbon cutting tour on existing GRT in Ukiah.



## **GRT Construction:**

City of Willits Rail-with-Trail  
(1.6 miles, Segment 9)

**Partner:** City of Willits; has GRTA license agreement

**Funding:** ATP and SCC

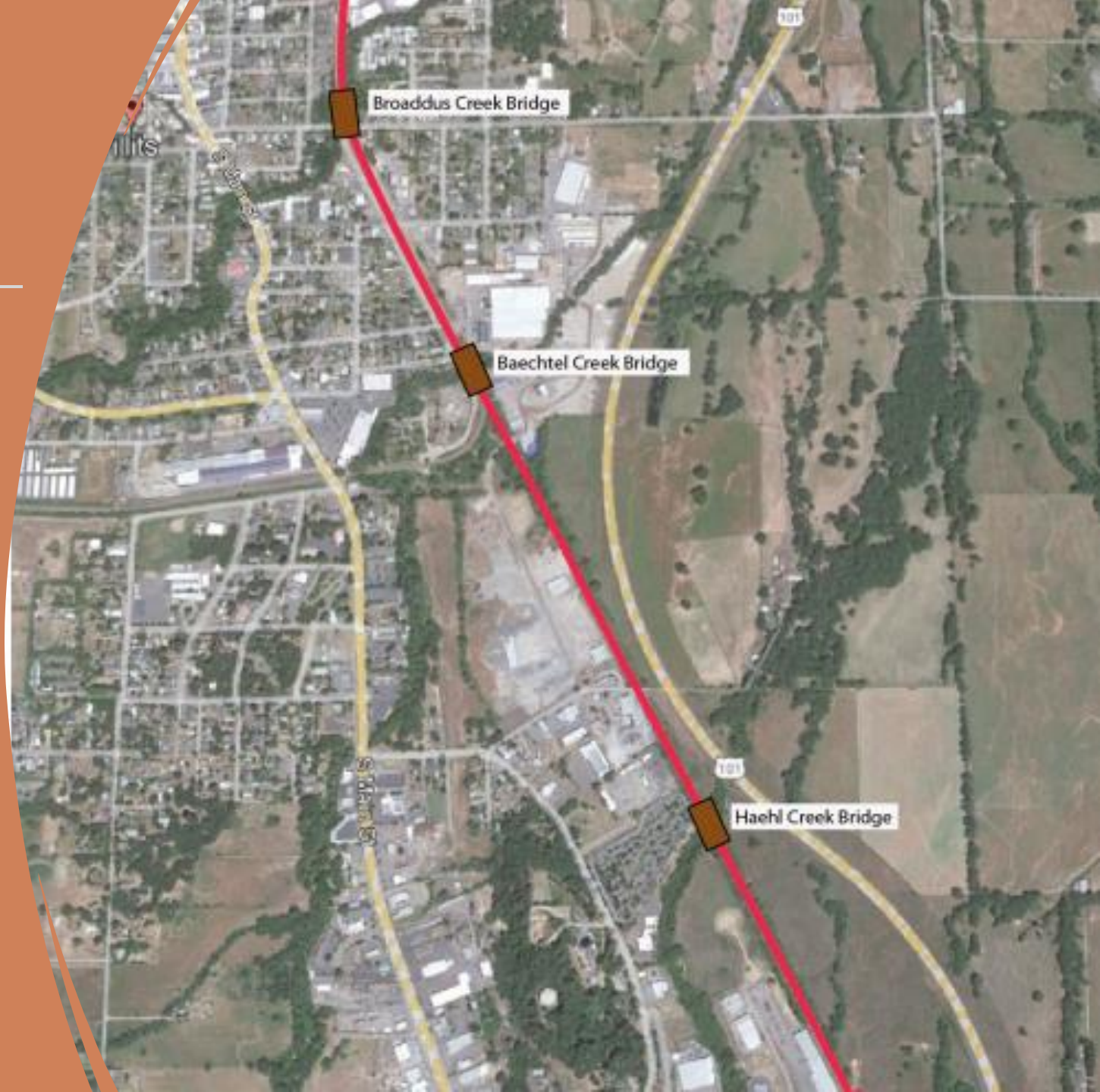
**CEQA:** Complete (ISMND), GRTA has adopted

### **Next Steps:**

- On Oct. 2024 California Transportation Commission (CTC) agenda for approval to move from ATP-funded planning to ATP- and SCC-funded construction
- Construction RFP to be released by City in late 2024/early 2025

**Target Construction Time Frame:**  
2025-2026

Photo: Aerial view of Willits Rail-with-Trail alignment.





## **GRT Construction:**

Humboldt Bay Trail South  
(4.25 miles, Segment 35)

### **Connections:**

- Under construction- completes GRT between Eureka and Arcata!
- Indianola Cutoff, once Caltrans interchange project complete

**Partner:** County of Humboldt; has GRTA license agreement

**Funding:** ATP and SCC

**CEQA:** Complete (ISMND)

**Next Steps:** Opening Celebration!  
(Date TBA)

**Target Completion:** Late 2024-  
early 2025

